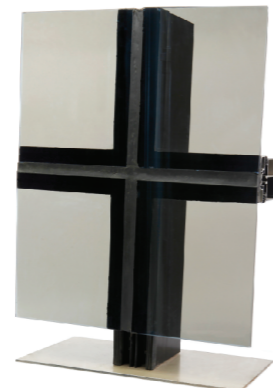


YANTRA® FACADE SYSTEMS

Standard range of façade systems to cater to all kind of façade applications like curtain walls, metal cladding, balustrades, etc are designed considering the parameters of tropical climatic conditions and fulfilling the basic requirements of structural stability & weather protection i.e. sustainability to wind & seismic loads, air infiltration and water penetration for the end user. The systems are based on the International standards and comply with the said specification. Project based certification for all products used in the system and the overall system certification can be provided on request.



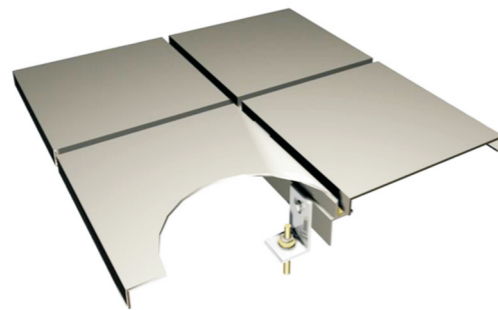
CURTAIN WALL



STRUCTURAL GLAZING



FRAMELESS

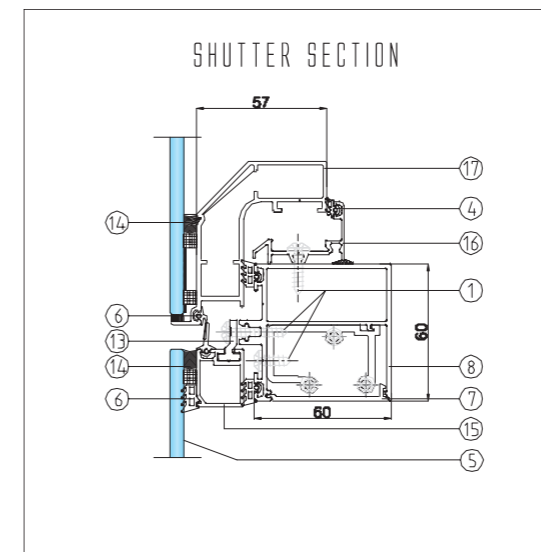
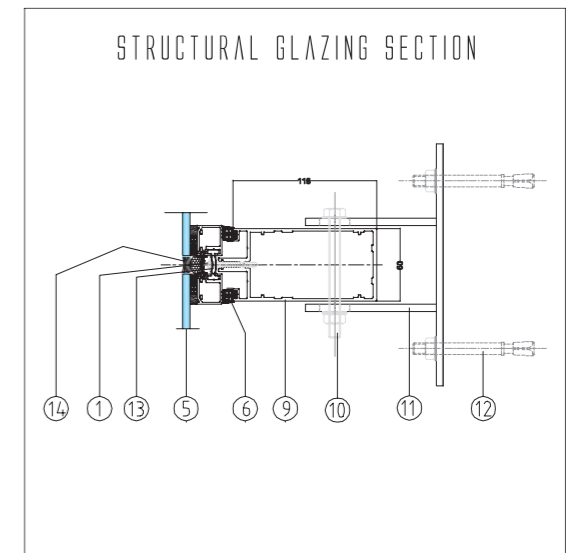
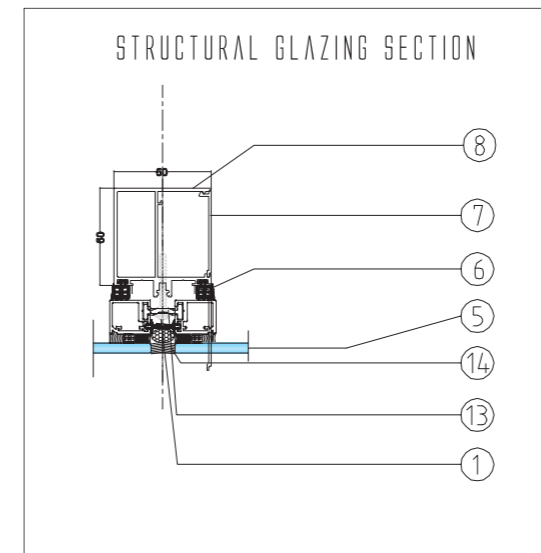
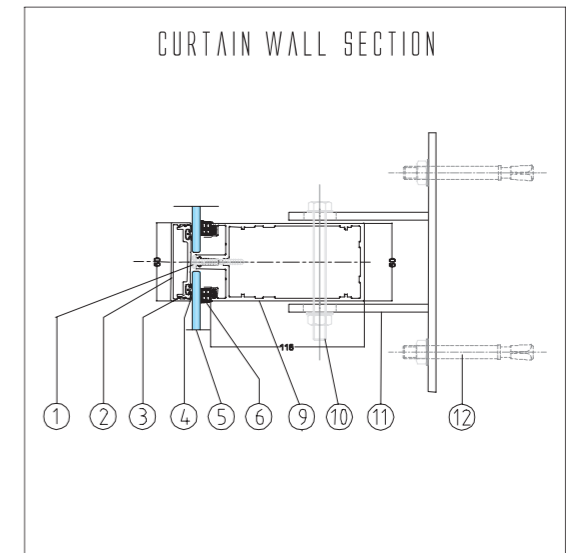
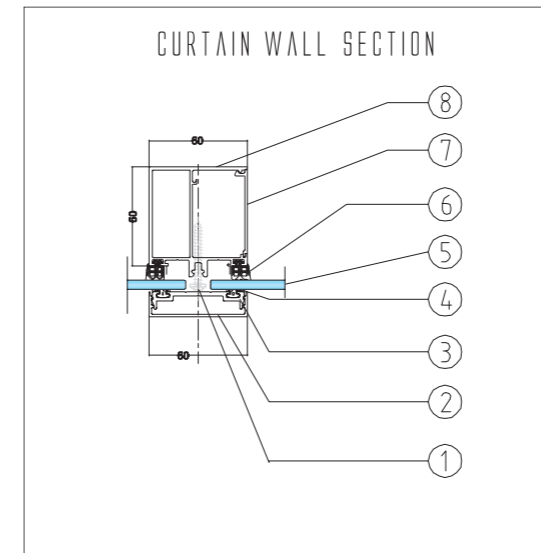


METAL FACADES

FEATURES

- System profiles are designed considering specified wind loads based on facade layout, elevation details & location parameters to ensure structural performance requirements are taken care of based on IS tropical codes.
- System designs formatted to ensure larger adaptability to varied cladding requirements based on thermal and acoustic performances.
- System specific requirements on smoke seal & fire stop inbuilt in all façade systems.
- System reliability based on in-house factory production with specialized tooling and cutting machinery and installation taken care by trained qualified team members to ensure end user performance expectations are met with.

SECTION DETAILS



- DESCRIPTION:
- 01 - SCREW
 - 02 - PRESSURE PLATE CAP
 - 03 - PRESSURE PLATE
 - 04 - EPDM
 - 05 - GLASS
 - 06 - EPDM
 - 07 - TRANSOM CAP
 - 08 - TRANSOM
 - 09 - MULLION
 - 10 - BOLTS AND NUTS
 - 11 - MS BRACKET
 - 12 - ANCHOR FASTNER
 - 13 - PANEL CONNECTOR
 - 14 - SILICONE
 - 15 - PANEL SECTION
 - 16 - OUTER FRAME SECTION
 - 17 - SHUTTER SECTION